

ALIVE

Kids Snack Sheet

**EMMAUS
ROAD**

WAY IN WONDERS

Have you ever had a BIG surprise?

Have you ever been on a surprising journey?



I SPY

Jesus did some seriously surprising stuff. Can you find the pictures of him:

- Turning water into wine
- Healing a man who couldn't walk
- Walking on water
- Calming a storm
- Dying and coming back to life

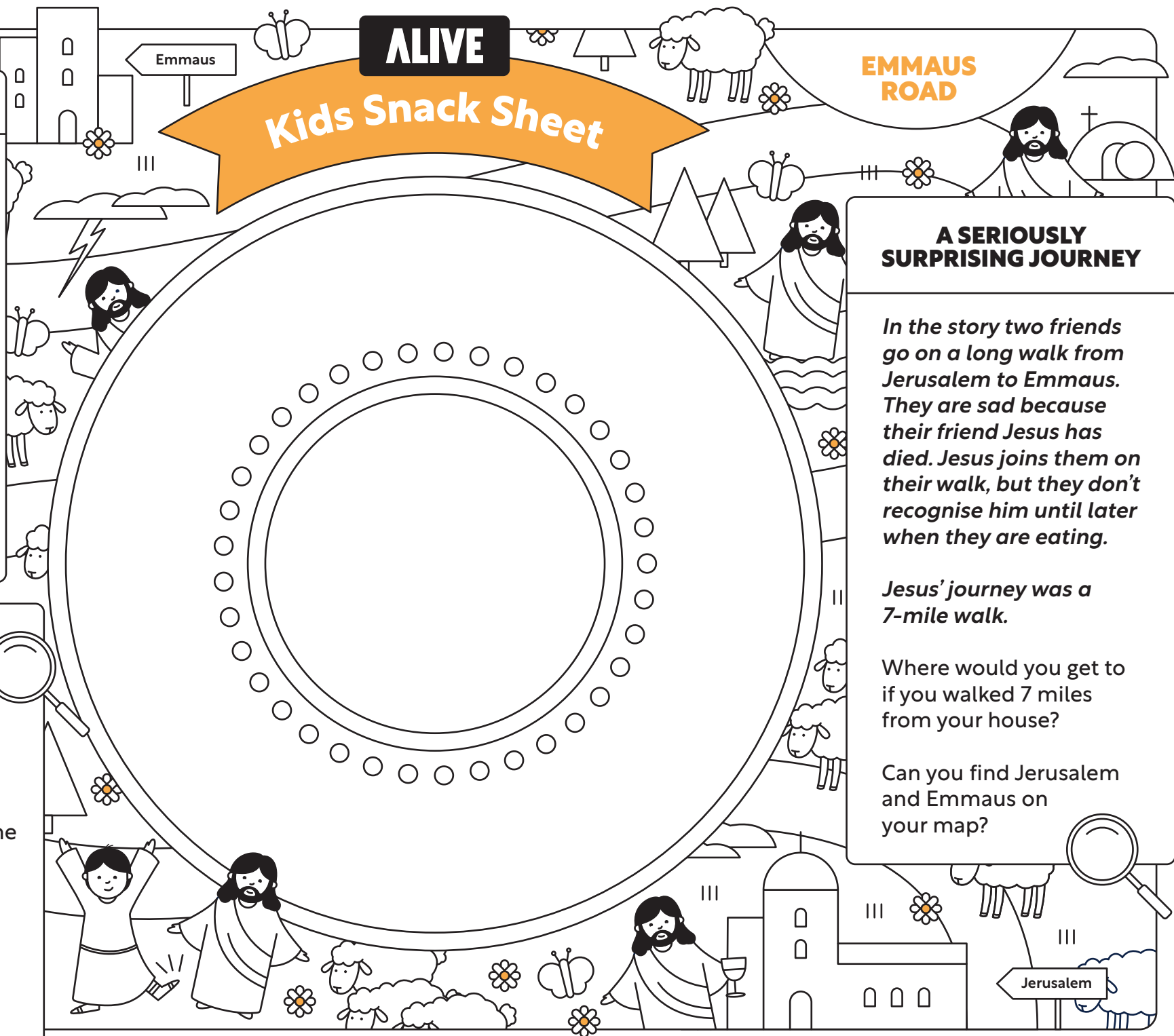
A SERIOUSLY SURPRISING JOURNEY

In the story two friends go on a long walk from Jerusalem to Emmaus. They are sad because their friend Jesus has died. Jesus joins them on their walk, but they don't recognise him until later when they are eating.

Jesus' journey was a 7-mile walk.

Where would you get to if you walked 7 miles from your house?

Can you find Jerusalem and Emmaus on your map?



This way



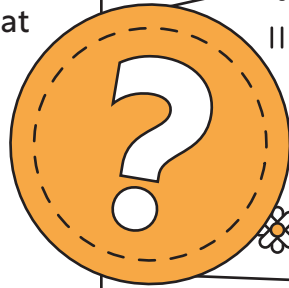
WATCH:
The Seriously Surprising Story



READ OR WATCH:
The Awesome Easter Surprise

HEAD SCRATCHING QUESTIONS

- 1 If this story happened today what would it look like?
- 2 What is the story showing and telling me?
- 3 Could it make a difference to my life? How?
- 4 Did it make a difference?



OVER TO YOU

Have you got any questions?

PUT YOURSELF IN THE PICTURE

As the people walked, they met Jesus and realised who he was. They realised that this was their friend Jesus who had done all the amazing things you found in your I Spy activity and who had also died and come back to life. Wow!

Have you met Jesus? Draw where you are and where Jesus is on your sheet.

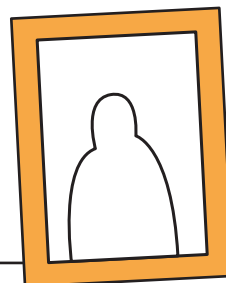


For more activities scan the QR code to check out The In-Between Time resources on Bible Society's website.



EXTRA

Why do you think Jesus' friends didn't recognise him at first? We're not certain why, but it might be because the friends didn't expect to see Jesus or because his resurrected (alive again) body was different in some way.



ALIVE